

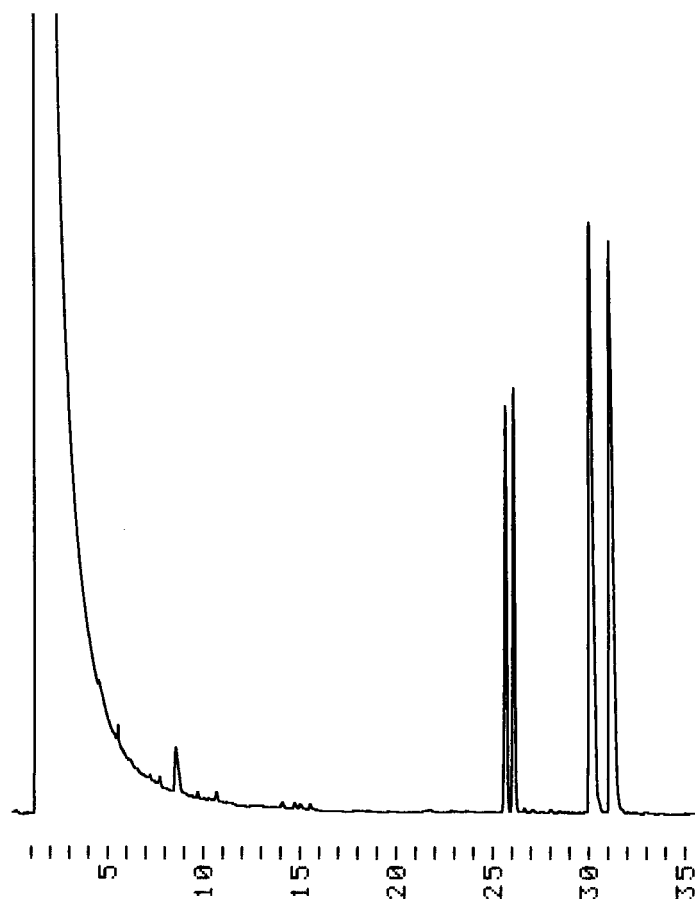
»Simultaneous Separation of Linalool und Linalyl acetate«

Application note for 6-TBDMS-2,3-Acetyl-beta-Cyclodextrin

Temperature programme: 65 °C for 5 minutes isothermal, then 1°/min ramp

This temperature programme is particularly suited to determine the title compounds in a matrix of typical essential oils. Alternatively, the mixture of both pure compounds can be separated faster at 85 °C isothermal. Carrier gas pressure 0.5 bar hydrogen, FID detector.

Order of elution: Linalyl acetate, then linalool



Similar separations with this stationary phase (same column):
Camphor (100 °C isothermal, RT 5 min, baseline separated)
 α -Terpineol (100 °C isothermal, RT 8.5 min, baseline separated)