

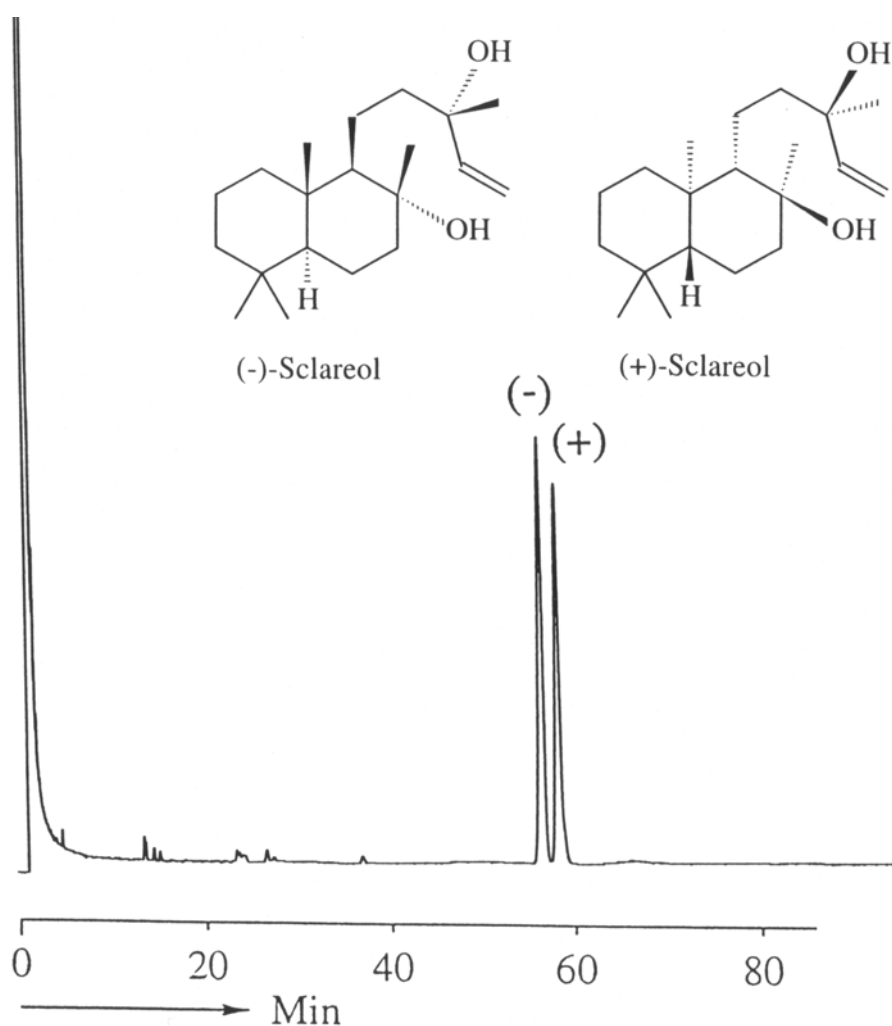
## »Enantioseparations of Diterpenes«

Application note for 6-TBDMS-2,3-Methyl-beta-Cyclodextrin

Temperature Program: 175 °C isothermic

Conditions: Carrier gas pressure 0.5 bar hydrogen, FID detector

Column: 25 m column length, 250 µm I.D. fused silica capillary with 50% 6T23Me-β-CD in polysiloxane OV 1701



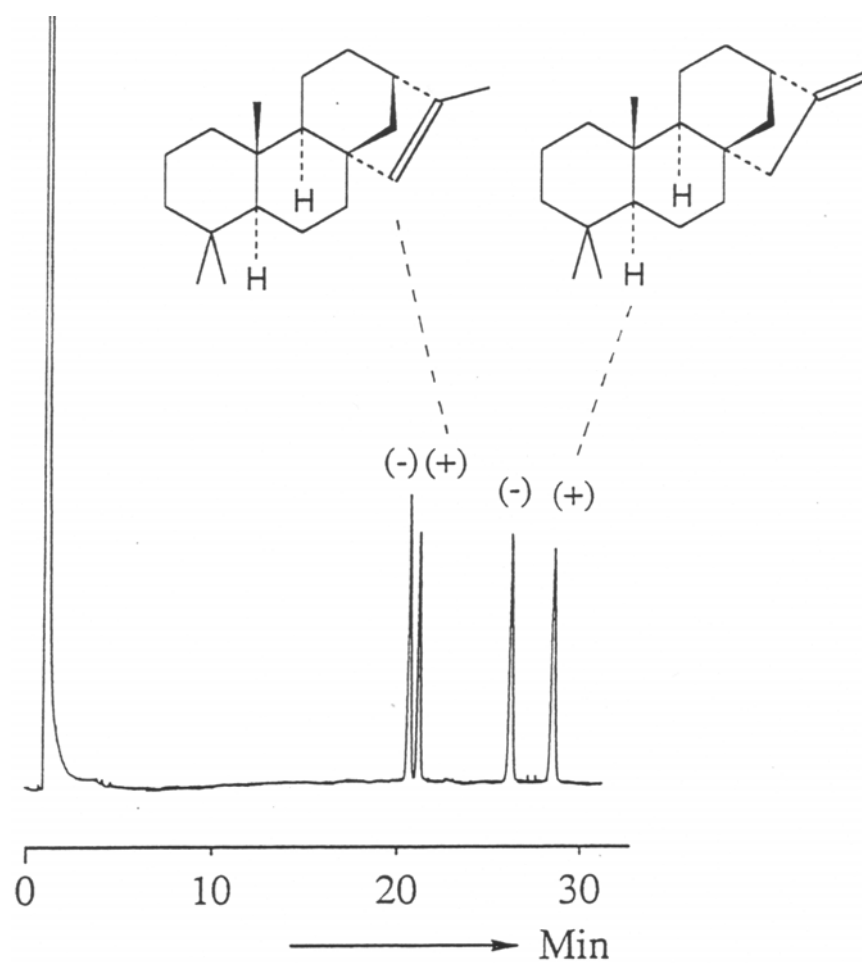
## »Enantioseparations of Diterpenes«

Application note for 6-TBDMS-2,3-Methyl-beta-Cyclodextrin

Temperature Program: 160 °C isothermic

Conditions: Carrier gas pressure 0.5 bar hydrogen, FID detector

Column: 25 m column length, 250 µm I.D. fused silica capillary with 50% 6T23Me-β-CD in polysiloxane OV 1701



## »Enantioseparations of Diterpenes«

Application note for 6-TBDMS-2,3-Methyl-beta-Cyclodextrin

Temperature Program: 150 °C isothermic

Conditions: Carrier gas pressure 0.5 bar hydrogen, FID detector

Column: 25 m column length, 250 µm I.D. fused silica capillary with 50% 6T23Me-β-CD in polysiloxane OV 1701

